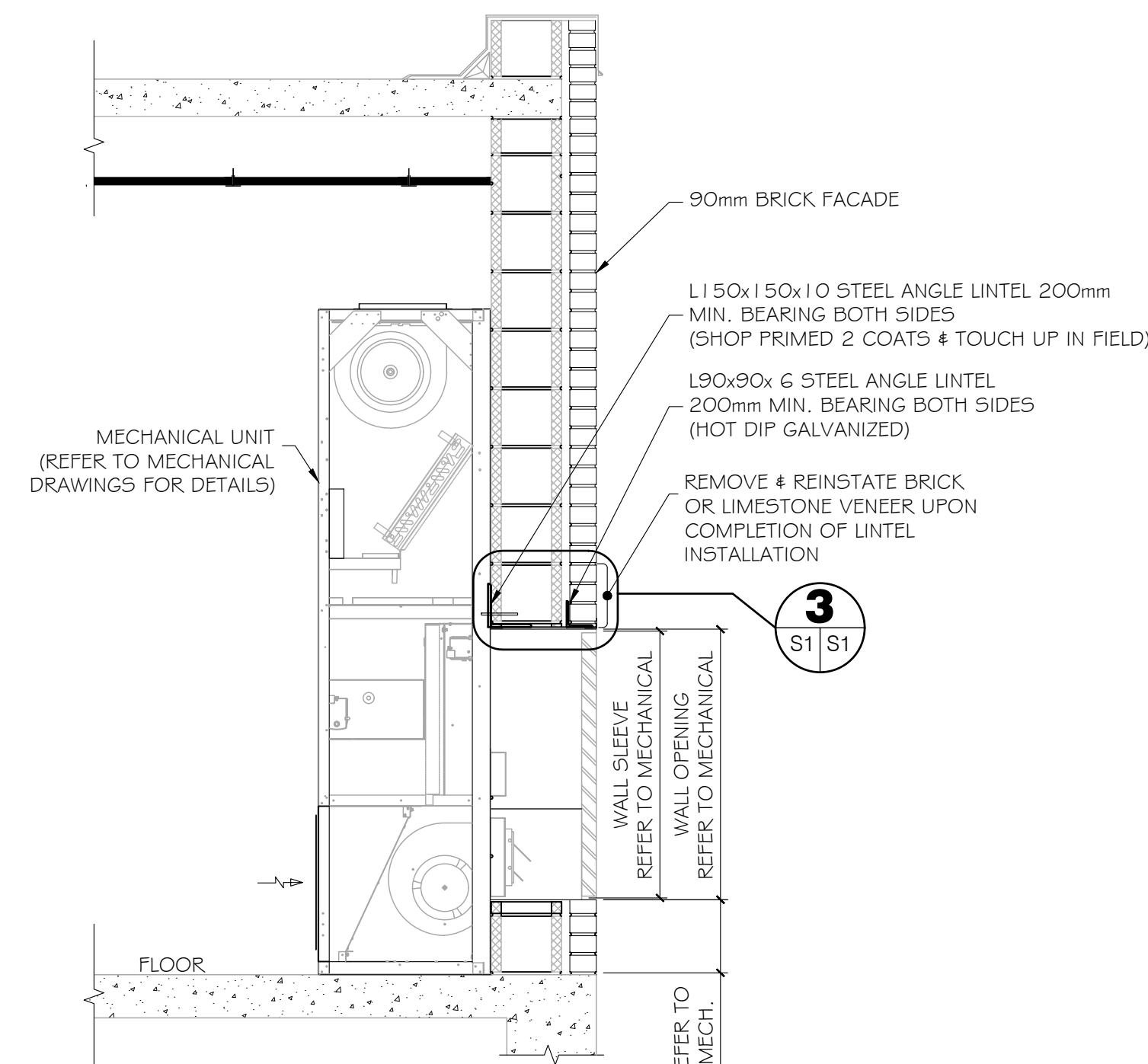
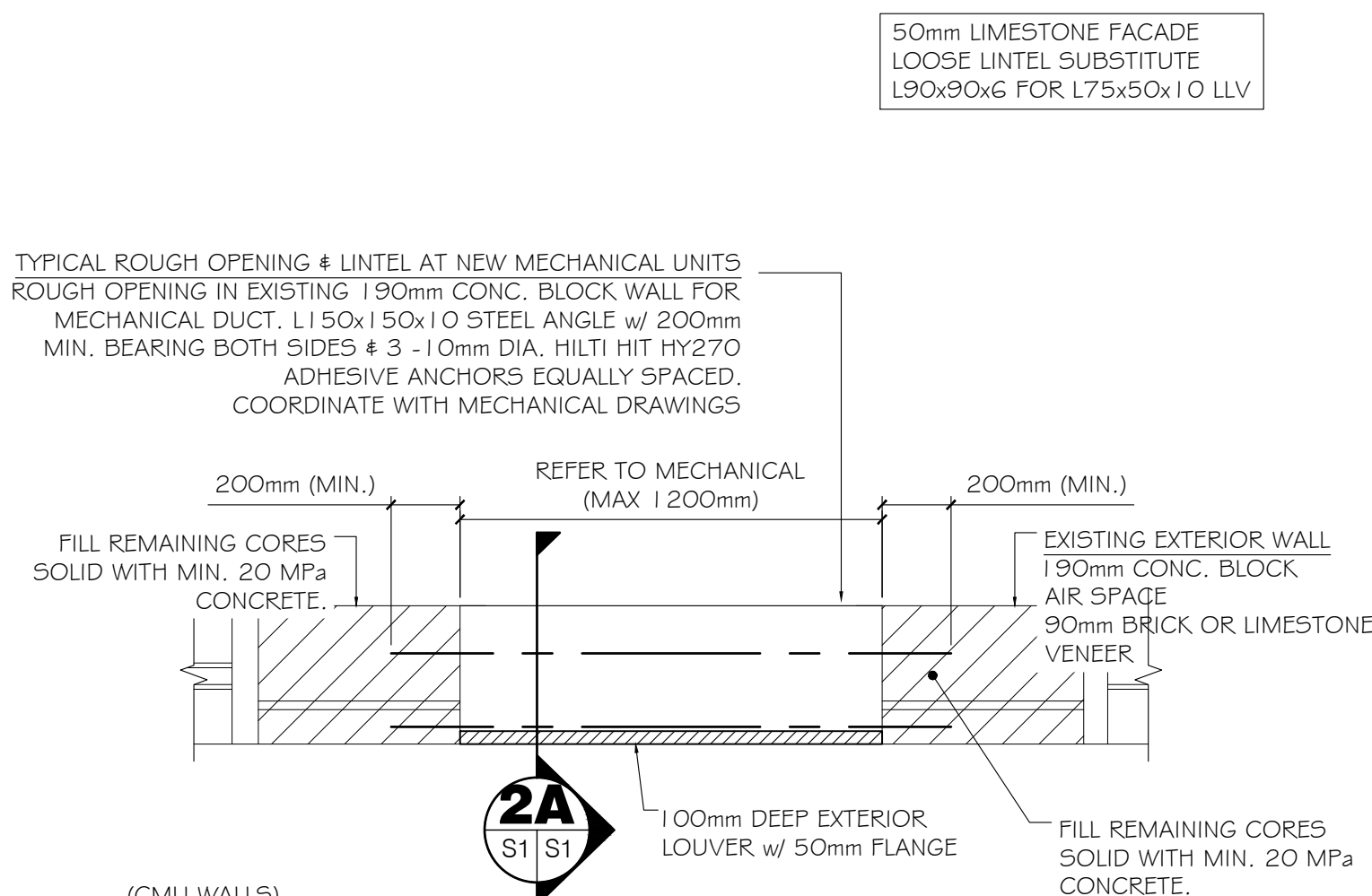


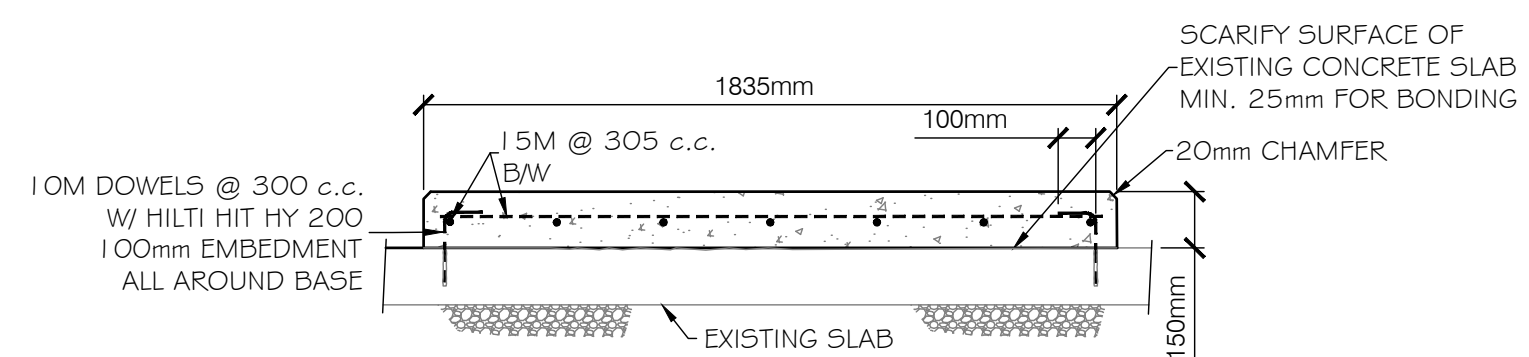
**3** WALL SECTION AT MECHANICAL UNIT LINTEL  
S1 | S1 SCALE: 1:5



**2A** TYPICAL WALL OPENING SECTION  
S1 | S1 SCALE: 1:20

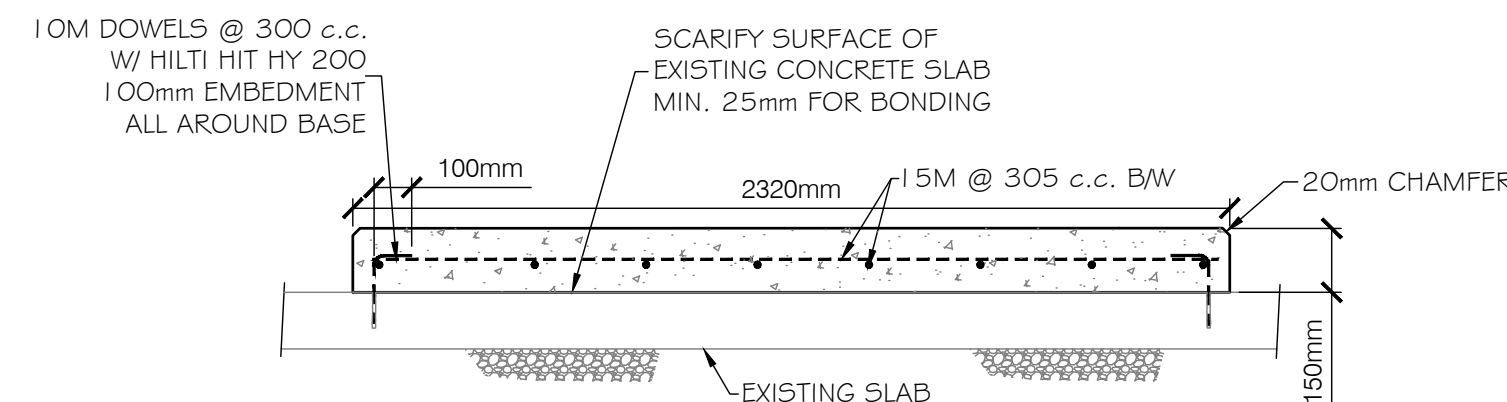


**1A** TYPICAL WALL OPENING FOR MECHANICAL UNIT  
S1 | S1 SCALE: 1:20

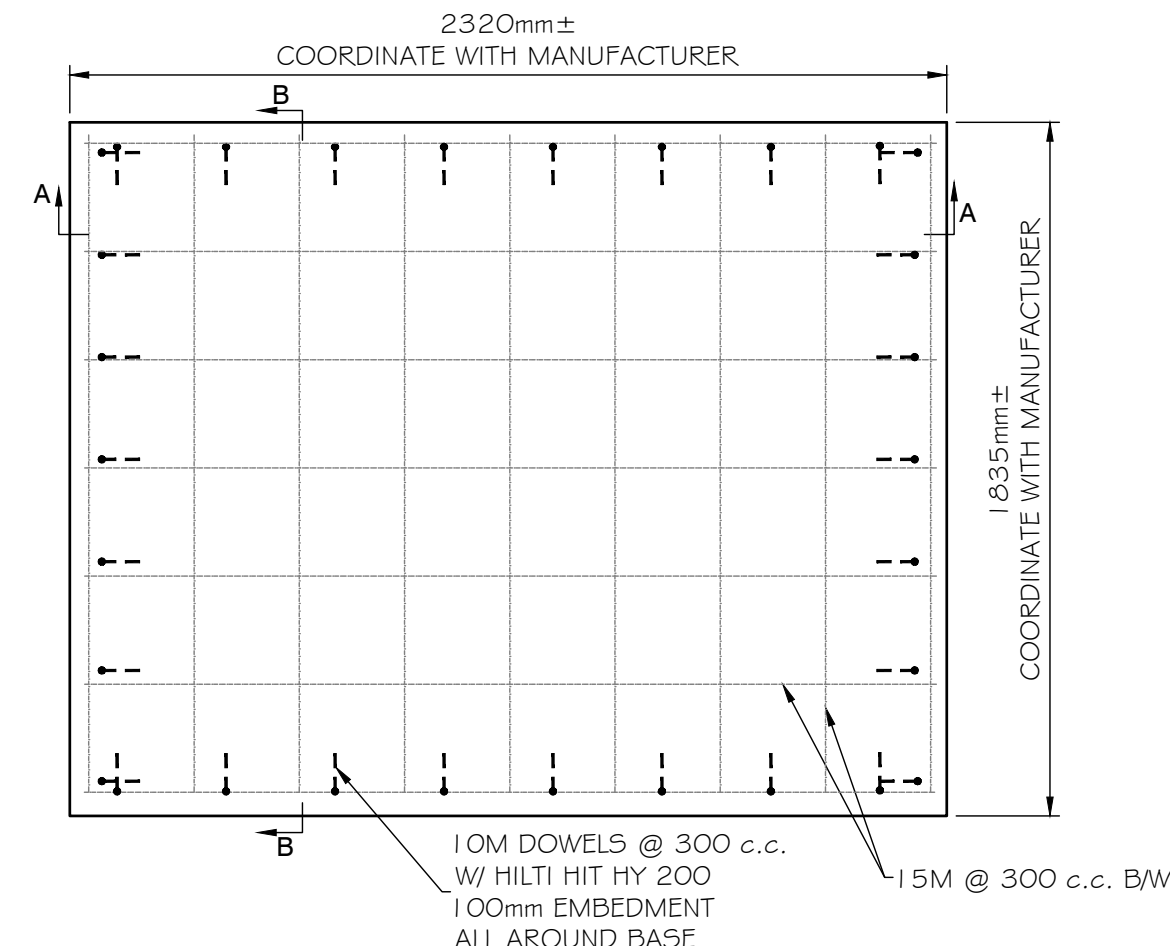


**SECTION B-B**  
SCALE: 1:20

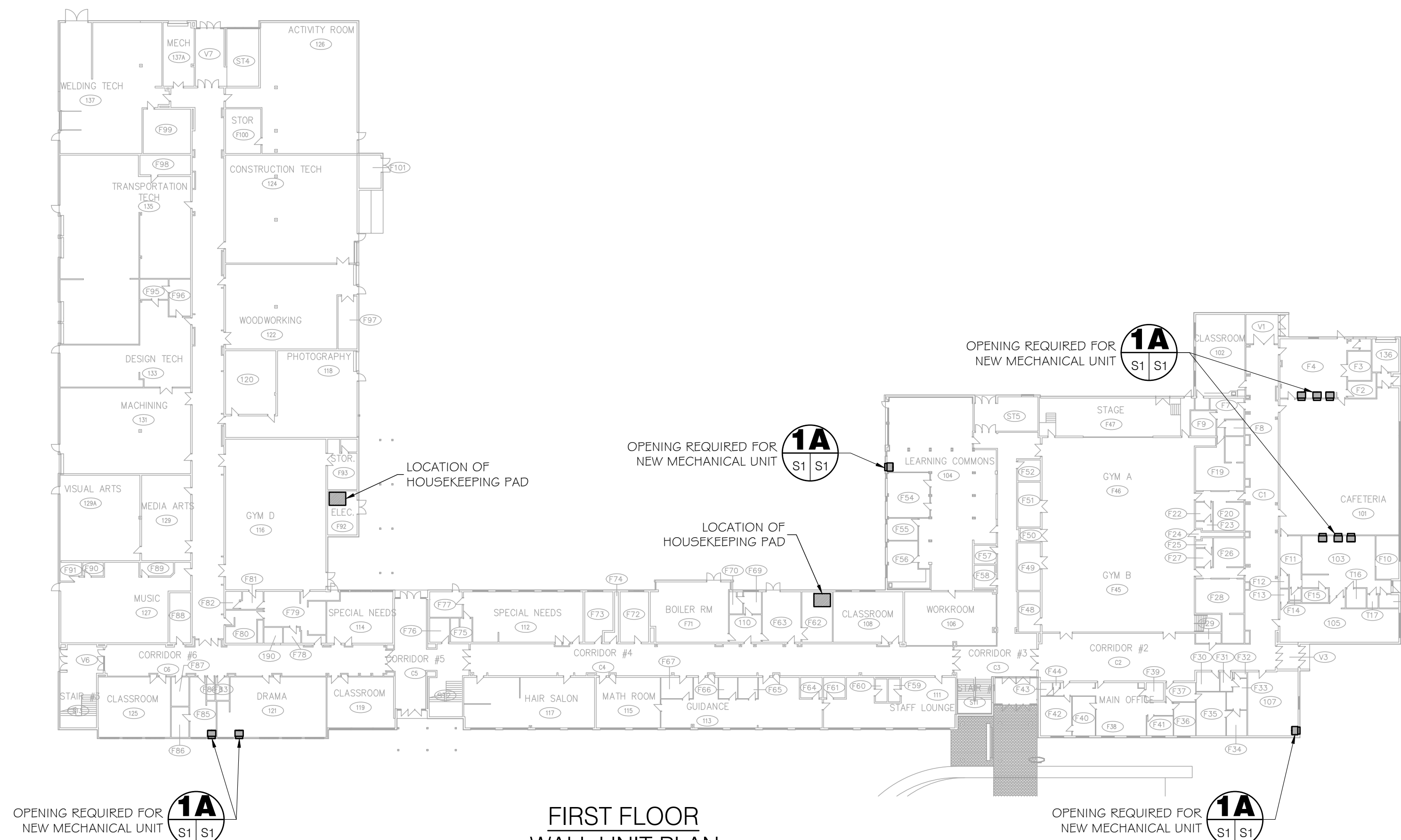
NOTE:  
EQUIPMENT ANCHORAGE  
BY OTHERS



**SECTION A-A**  
SCALE: 1:20



**PLAN**  
SCALE: 1:20



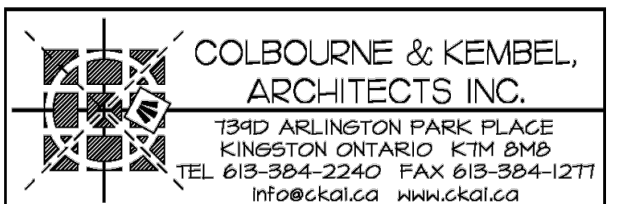
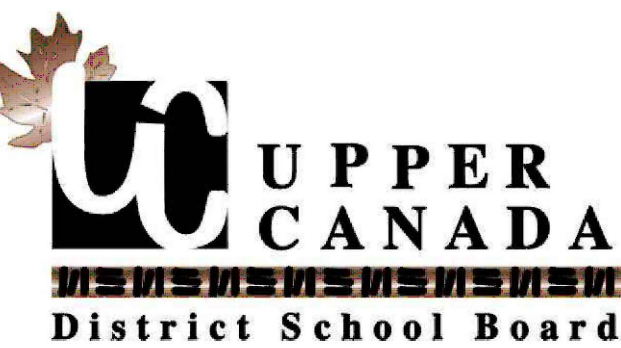
**FIRST FLOOR  
WALL UNIT PLAN**  
SCALE = 1:500

## CONCRETE NOTES

1. ROUGHEN SURFACE OF EXISTING CONCRETE SLAB FOR BONDING.
2. CONCRETE TO BE 35MPa @ 28 DAYS, WITH AN AIR CONTENT OF 3% AT TIME OF PLACING. SLOPE TO DRAIN OUT, DESIGN CONCRETE SLAB FOR CLASS 'N' EXPOSURE.
3. REINFORCING STEEL TO BE  $F_y=400MPa$ .
4. ENGINEER TO INSPECT FORMS PRIOR TO PLACING CONCRETE.
5. PROVIDE 24"x24" 'L' BARS AT ALL CORNERS.
6. CLASS 'B' DEVELOPMENT.
6. ALL WORK TO 2024 ONTARIO BUILDING CODE.
7. MAINTAIN MIN. CLEAR COVER OF 2" FROM ALL OTHER SIDES. PROVIDE SUFFICIENT CHAIRS.

## STEEL NOTES

1. CONTRACTOR TO FIELD VERIFY ALL DIMENSIONS PRIOR TO FABRICATING STEEL WORK.
2. ALL STEEL TO BE  $F_y=350MPa$  PLATE AND ANGLE TO BE  $F_y=300MPa$  TO CAN G40.21-13. ERECTION TO CSA S16-24.
3. ALL EXTERIOR STEEL SHALL BE HOT DIPPED GALVANIZED TO CAN/CSA - G164-M92. PROVIDE MINIMUM COATING OF 600G/M<sup>2</sup> TOUCH UP AS REQUIRED WITH ZINC RICH PAINT. INTERIOR STEEL TO BE SHOP PRIMED AND 2 COATS OF PAINT AND TOUCHED UP IN FIELD.
4. BOLTS SHALL BE MINIMUM GRADE ASTM A325. ANCHORS TO BE MIN. GRADE A307.
5. ALL BOLTS & ANCHORS SHALL BE HOT DIPPED GALVANIZED.
6. WELDING TO CAN W59-24 BY PERSONS & COMPANIES CERTIFIED BY CWB. USE E490XX ELECTRODES.
7. ALL PRE MANUFACTURED ANCHORS, FASTENERS AND COMPONENTS SHALL BE INSTALLED AS PER MANUFACTURER'S INSTALLATION GUIDE. CONTRACTOR TO PROVIDE SHOP DRAWINGS FOR ALL DETAILS TO BE SUBMITTED FOR ENGINEER'S REVIEW & APPROVAL.
8. SHOP DRAWING FOR STEEL CONNECTIONS SHALL BE SEALED BY P.ENG LICENCE IN THE PROVINCE OF ONTARIO.
9. EASTERN ENGINEERING GROUP DESIGN RESPONSIBILITIES ARE LIMITED TO THE FOLLOWING:  
1. NEW STRUCTURAL STEEL SUPPORTS & ROOF PENETRATIONS



## DESIGN LOADS

ROOF  
SNOW:  $S_s = 2.2 kPa$   
 $S_f = 0.4 kPa$   
 $I_s = 1.15$

DEAD:  $= 1.2 kPa$

RTU:  
275 Kg MAX PER CORNER

CONDENSING UNIT:  
90 KG MAX

WIND:  
 $q_{50} = 0.44 kPa$   
 $I_w = 1.15$

SEISMIC:  
 $S_a(0.2) = 0.454$   
 $I_e = 1.3$

SITE CLASS: "D"  
TABLE 4.1.8.1.8  
CATEGORY 11

\* PRIOR TO APPLICABLE LOAD FACTORS.

No.	By	Date	Revisions
4	B.O.B.	2026 04 08	ISSUED FOR TENDER & PERMIT
3	B.O.B.	2025 10 09	99% SUBMISSION
2	B.O.B.	2025 08 27	90% SUBMISSION
1	B.O.B.	2025 06 25	60% SUBMISSION
0	B.O.B.	2025 06 23	FOR REVIEW

All drawings, specifications and related documents are the copyright property of the Engineer and must be returned upon request. Reproduction of drawings, specifications, and related documents in part or whole is forbidden without the Engineer's written permission.

The contractor must check and verify all dimensions on the job prior to start of construction.

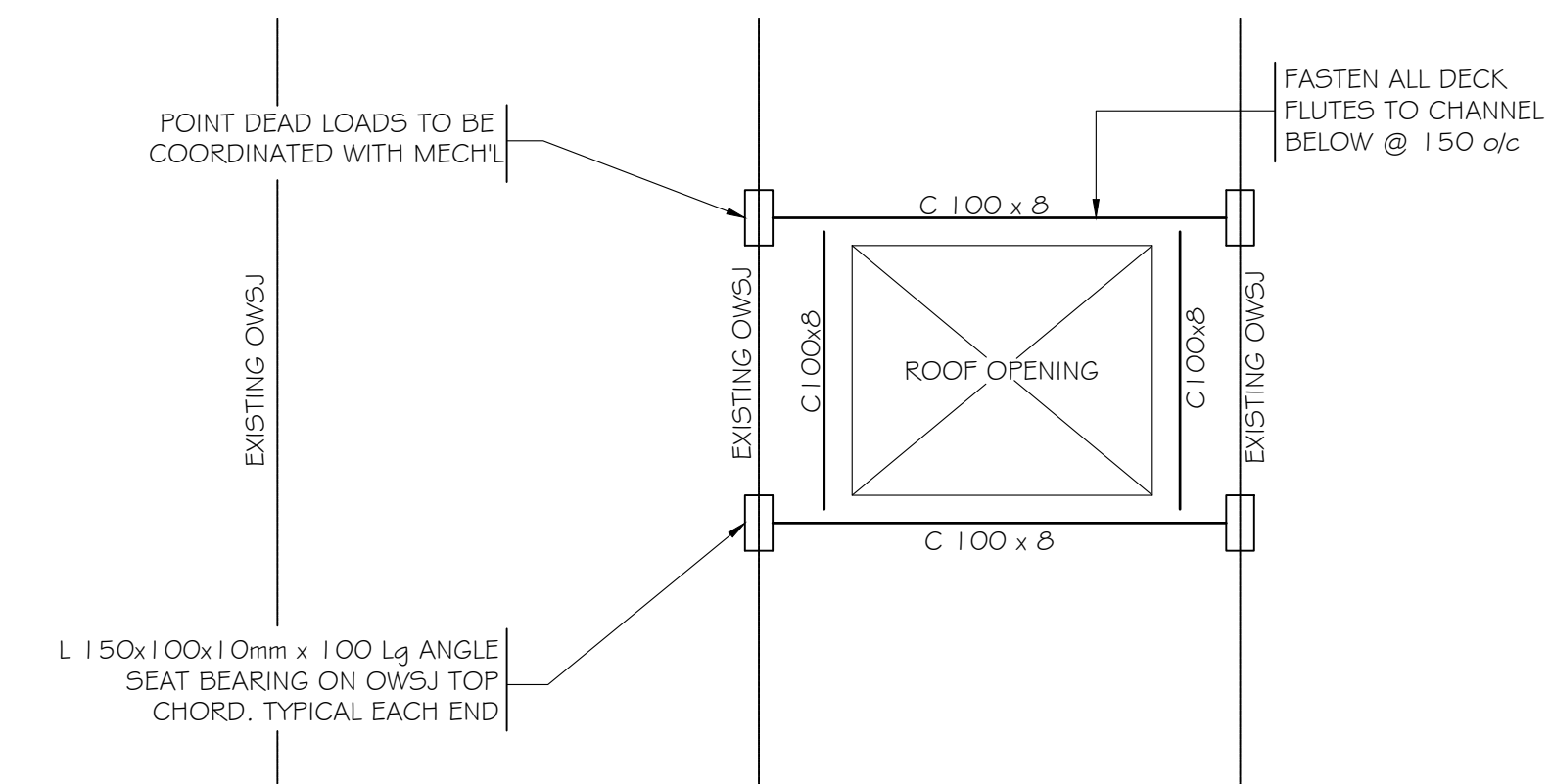
DRAWINGS ARE NOT TO BE SCALED



Project Title:  
**UCDSB  
THOUSAND ISLANDS  
SECONDARY SCHOOL**  
2510 PARKDALE AVE., BROCKVILLE, ON

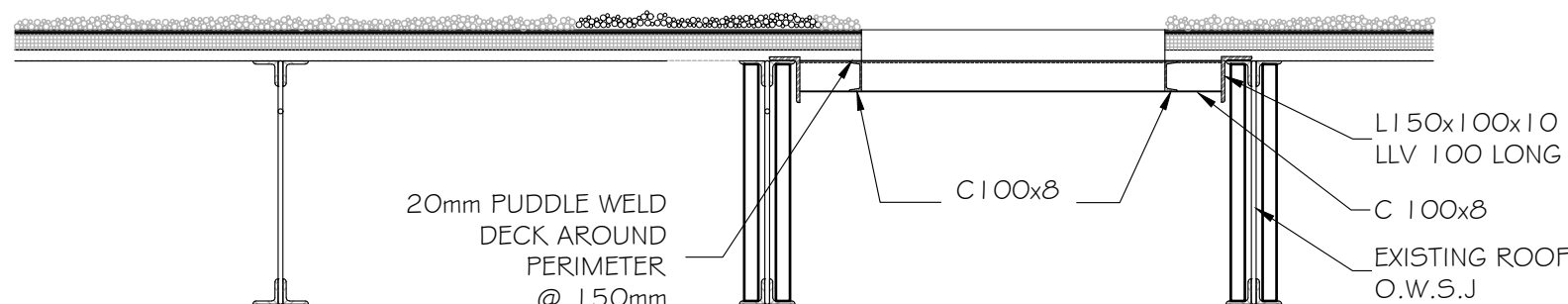
Design BC	Checked BC	Approved	Project No. 12114
Drawn B.O.B.	Checked BC	Date 2025 06 23	Contract No.
Scale: Horizontal: AS SHOWN	Drawing No. <b>S1</b>	REV DATE: 3/18/2026	



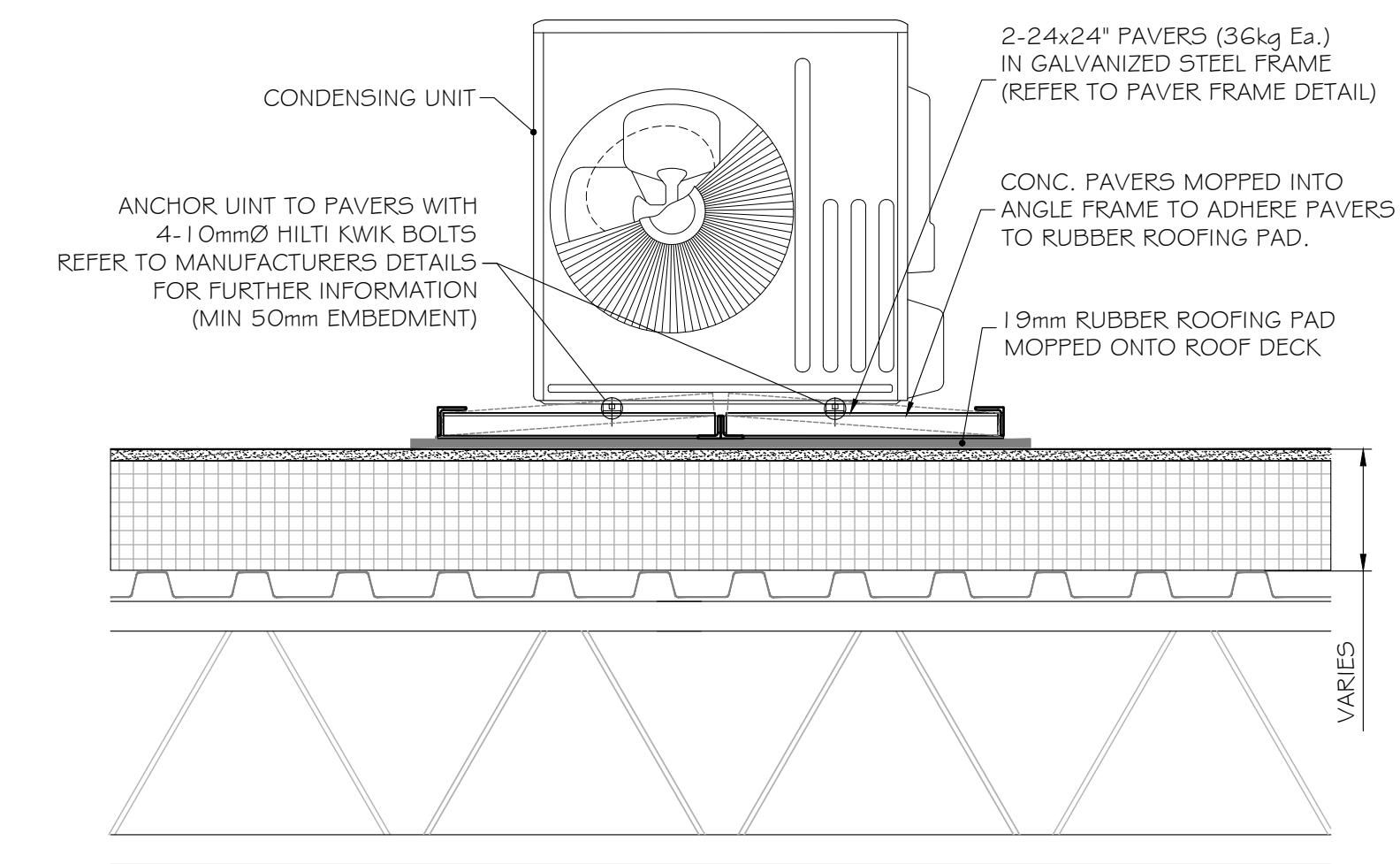


**TYP. ROOF OPENING PLAN**  
SCALE:- 1:25

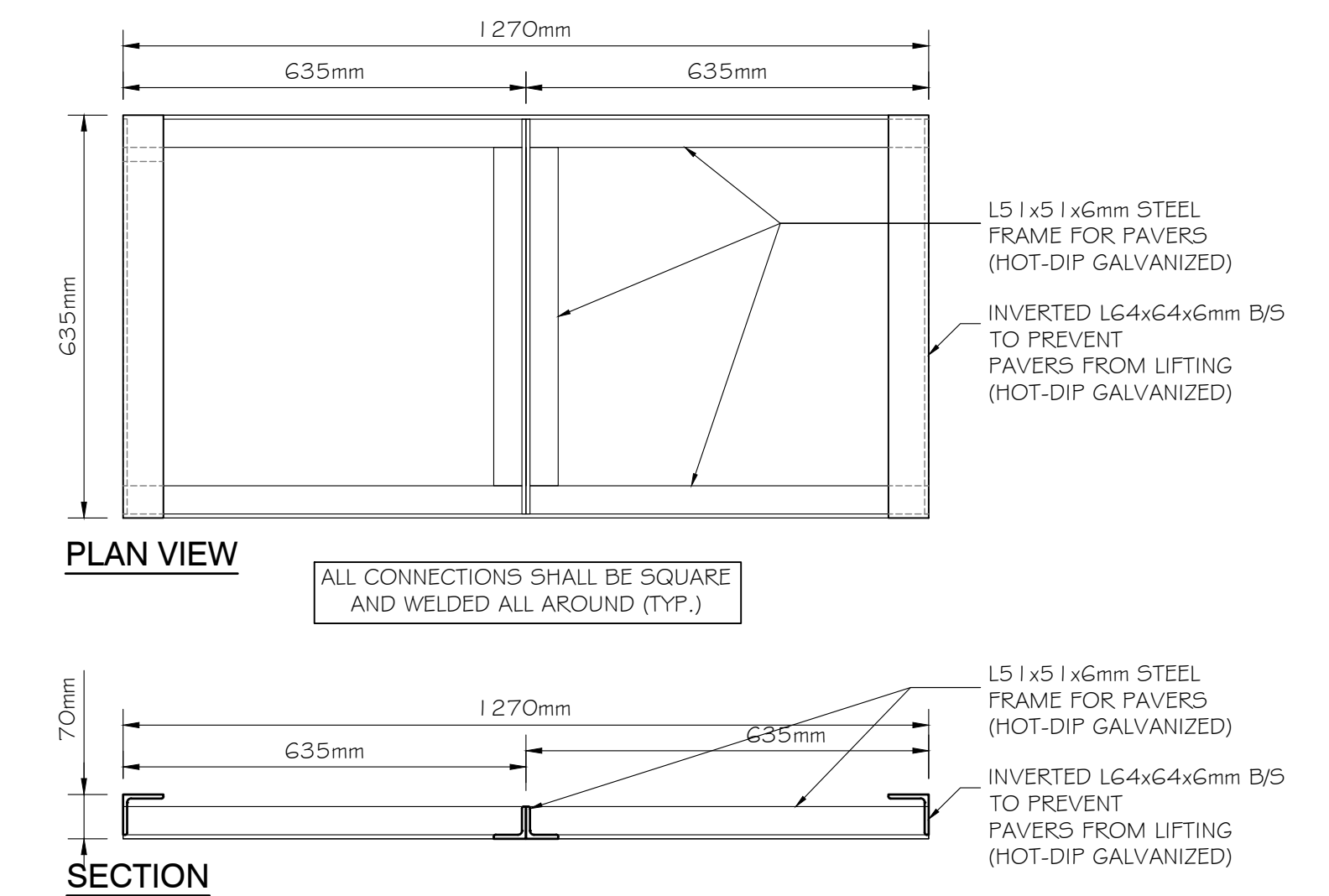
**NOTE:**  
CUT DECK & PROVIDE HILTI X-EDN19 PINS @ 150mm c.c ALONG SUPPORT ANGLE ALL AROUND. MAKE GOOD ALL SURFACES.



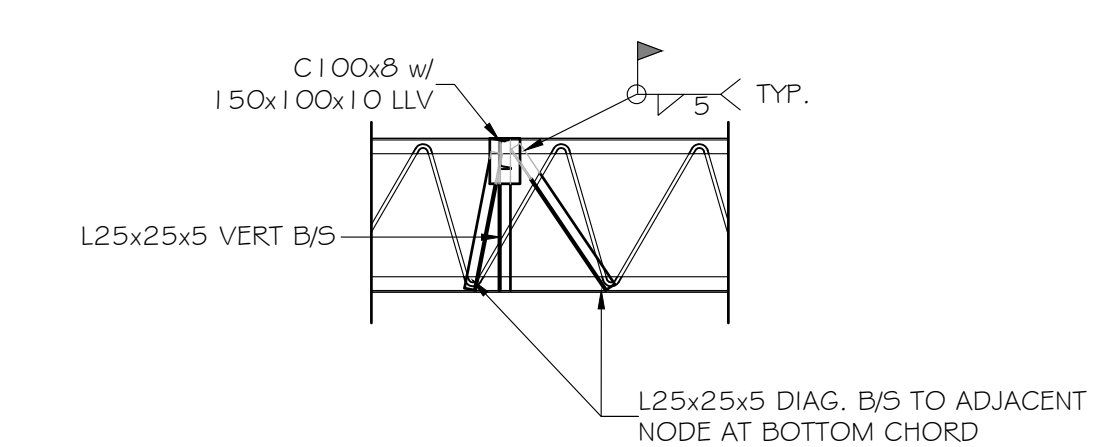
**TYP. ROOF OPENING SECTION**  
SCALE:- 1:25



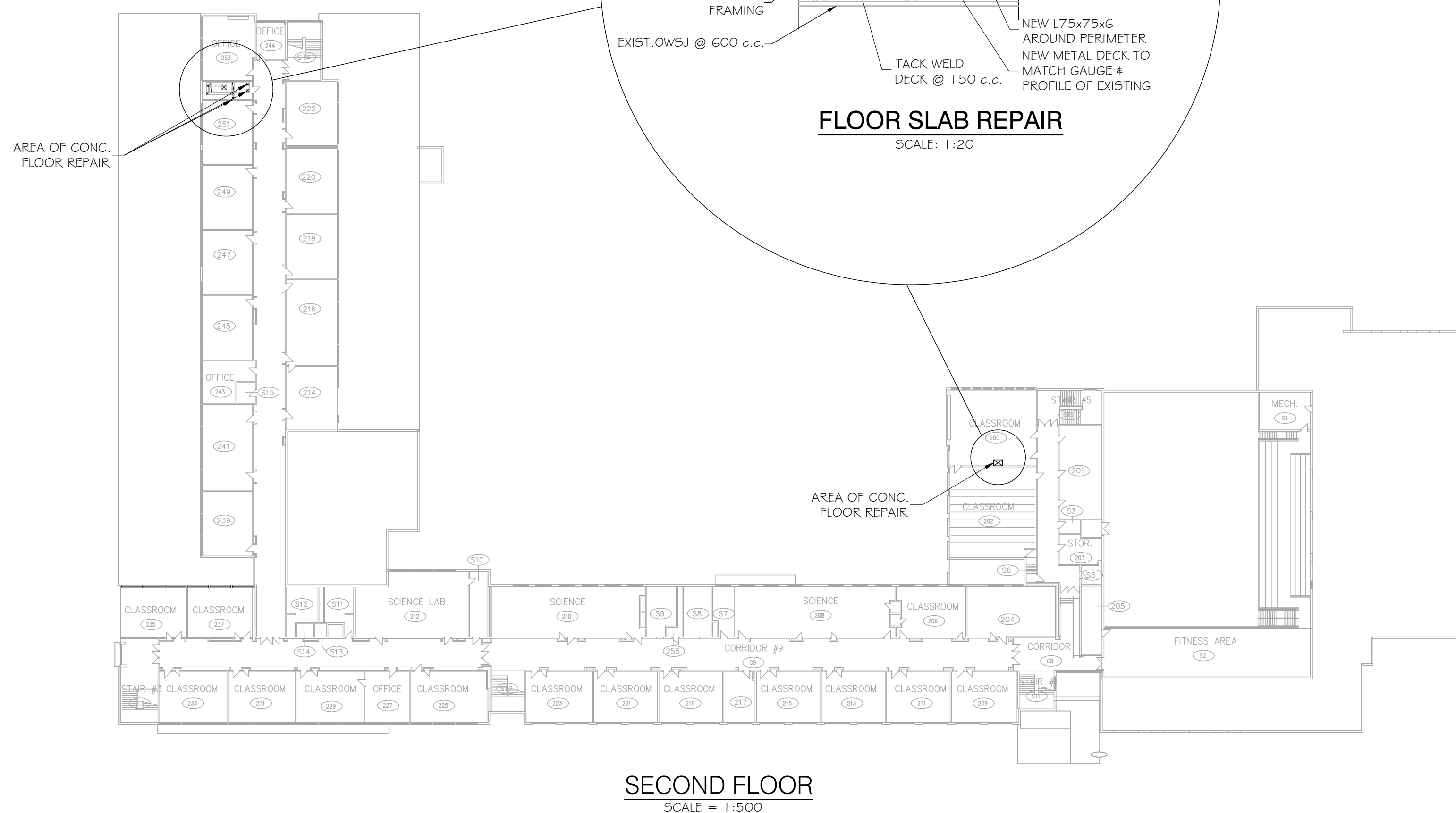
**CONDENSING UNIT - SEISMIC INSTALLATION DETAILS**  
SCALE:- 1:15



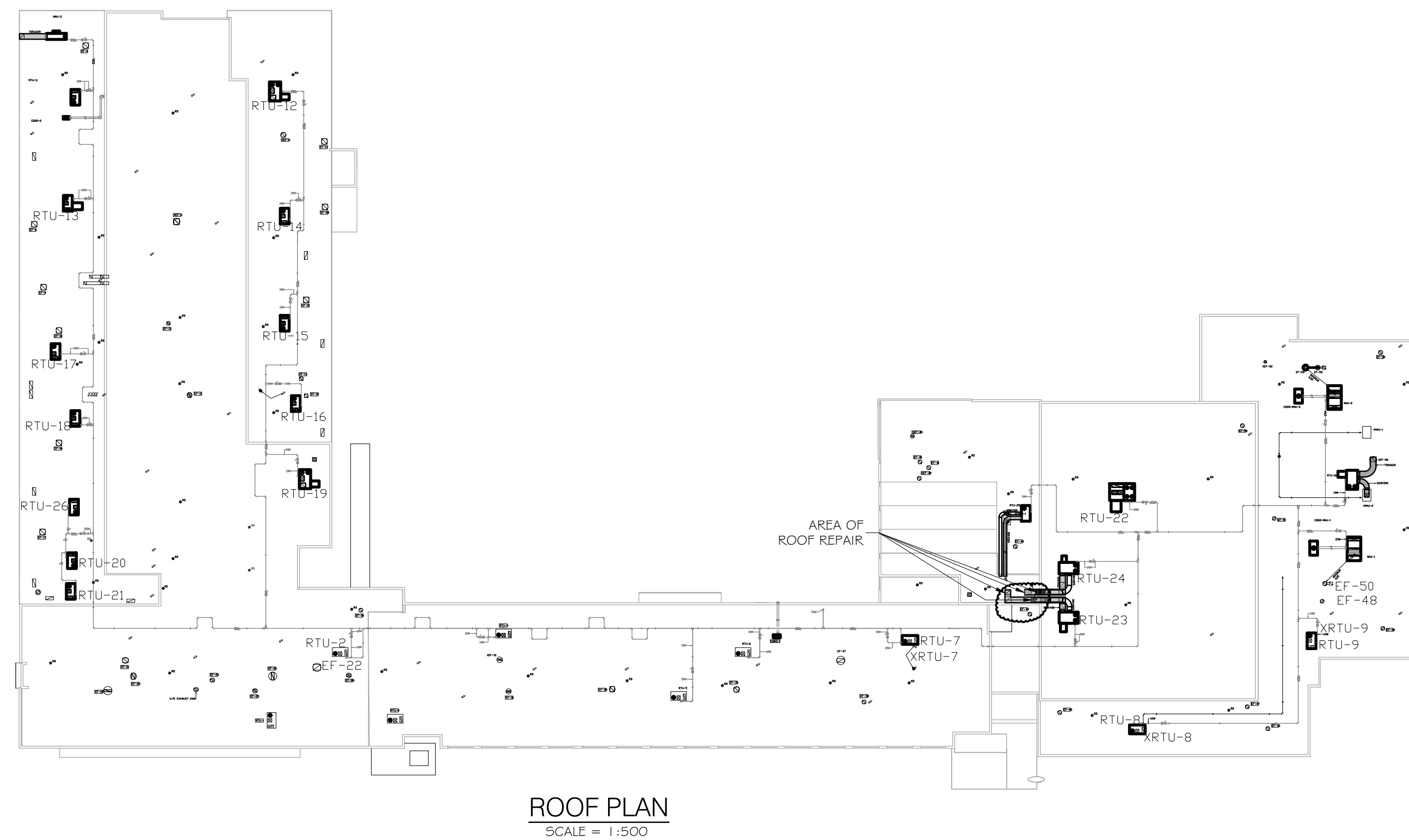
**ROOFTOP CONDENSING UNIT- PAVER FRAME DETAIL**  
SCALE:- 1:10



**ROOF OPENING OWSJ MODIFICATION**  
SCALE:- 1:25



**SECOND FLOOR**  
SCALE = 1:500



**ROOF PLAN**  
SCALE = 1:500

4	B.O.B.	2026 04 08	ISSUED FOR TENDER & PERMIT
3	B.O.B.	2025 10 09	99% SUBMISSION
2	B.O.B.	2025 08 27	90% SUBMISSION
1	B.O.B.	2025 06 25	60% SUBMISSION
0	B.O.B.	2025 06 23	FOR REVIEW
No.	By	Date	Revisions

All drawings, specifications and related documents are the copyright property of the Engineer and must be returned upon request. Reproduction of drawings, specifications, and related documents in part or whole is forbidden without the Engineers' written permission.

The contractor must check and verify all dimensions on the job prior to start of construction.

DRAWINGS ARE NOT TO BE SCALED



Design: BC	Checked: BC	Approved:	Project No.: 12114
Drawn: B.O.B.	Checked: BC	Date: 2025 06 23	Contract No.:
Scale: Horizontal: AS SHOWN Vertical: AS SHOWN	Drawing No.: <b>S2</b>	REV DATE: 3/18/2026	

4	B.O.B.	2026 04 08	ISSUED FOR TENDER & PERMIT
3	B.O.B.	2025 10 09	99% SUBMISSION
2	B.O.B.	2025 08 27	90% SUBMISSION
1	B.O.B.	2025 06 25	60% SUBMISSION
0	B.O.B.	2025 06 23	FOR REVIEW
No.	By	Date	Revisions

All drawings, specifications and related documents are the copyright property of the Engineer and must be returned upon request. Reproduction of drawings, specifications, and related documents in part or whole is forbidden without the Engineers' written permission.

The contractor must check and verify all dimensions on the job prior to start of construction.

DRAWINGS ARE NOT TO BE SCALED

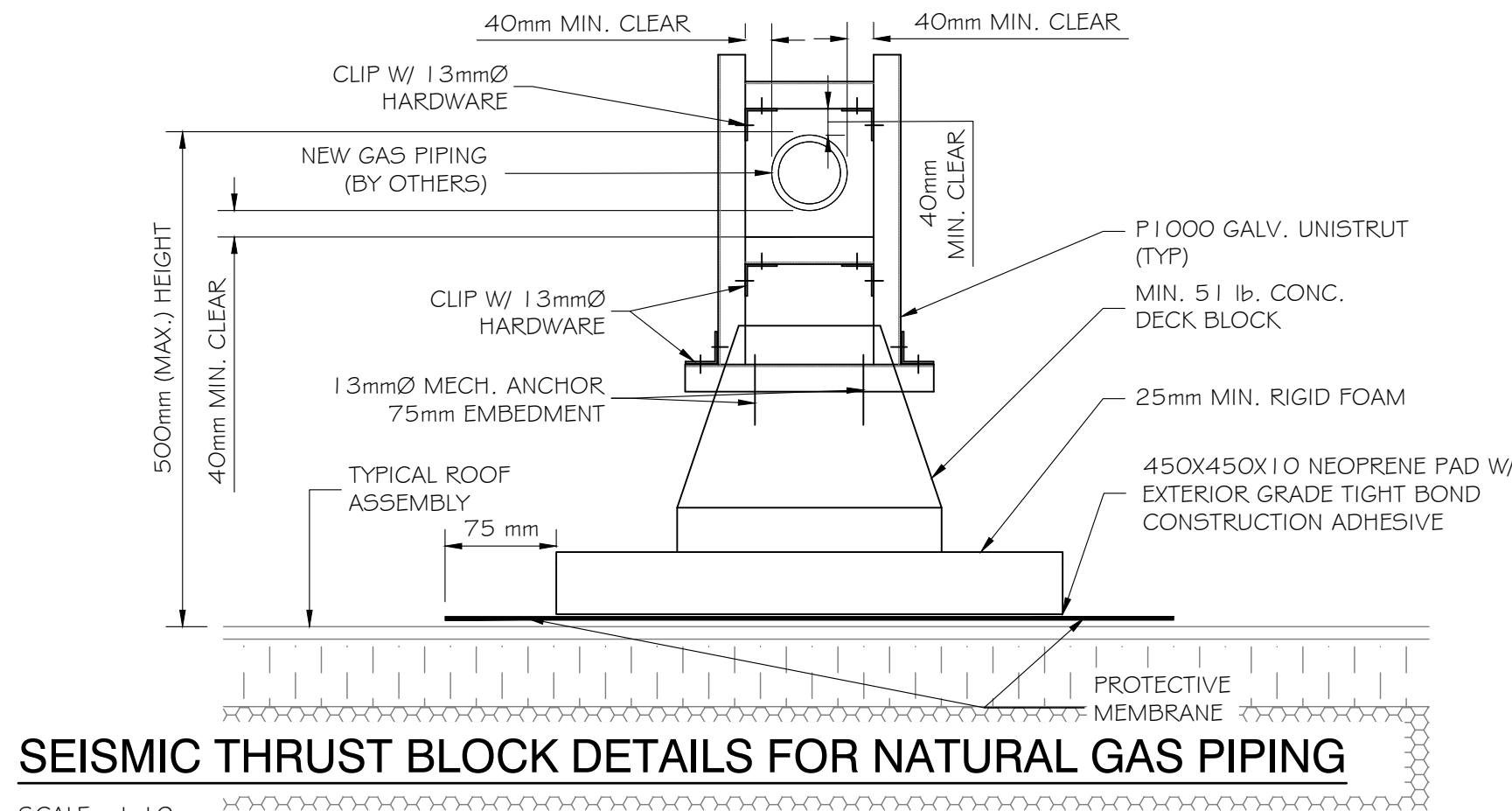


**EASTERN**  
**ENGINEERING GROUP INC.**  
CONSULTING ENGINEERS  
Apex Building  
100 Stronger Blvd. Suite 207  
Brockville, Ont. K6V 5J9  
Telephone: (613) 345-0400  
Facsimile: (613) 345-0008  
www.EastEng.com

Project Title:  
**UCDSB  
THOUSAND ISLANDS  
SECONDARY SCHOOL**  
2510 PARKEDALE AVE., BROCKVILLE, ON

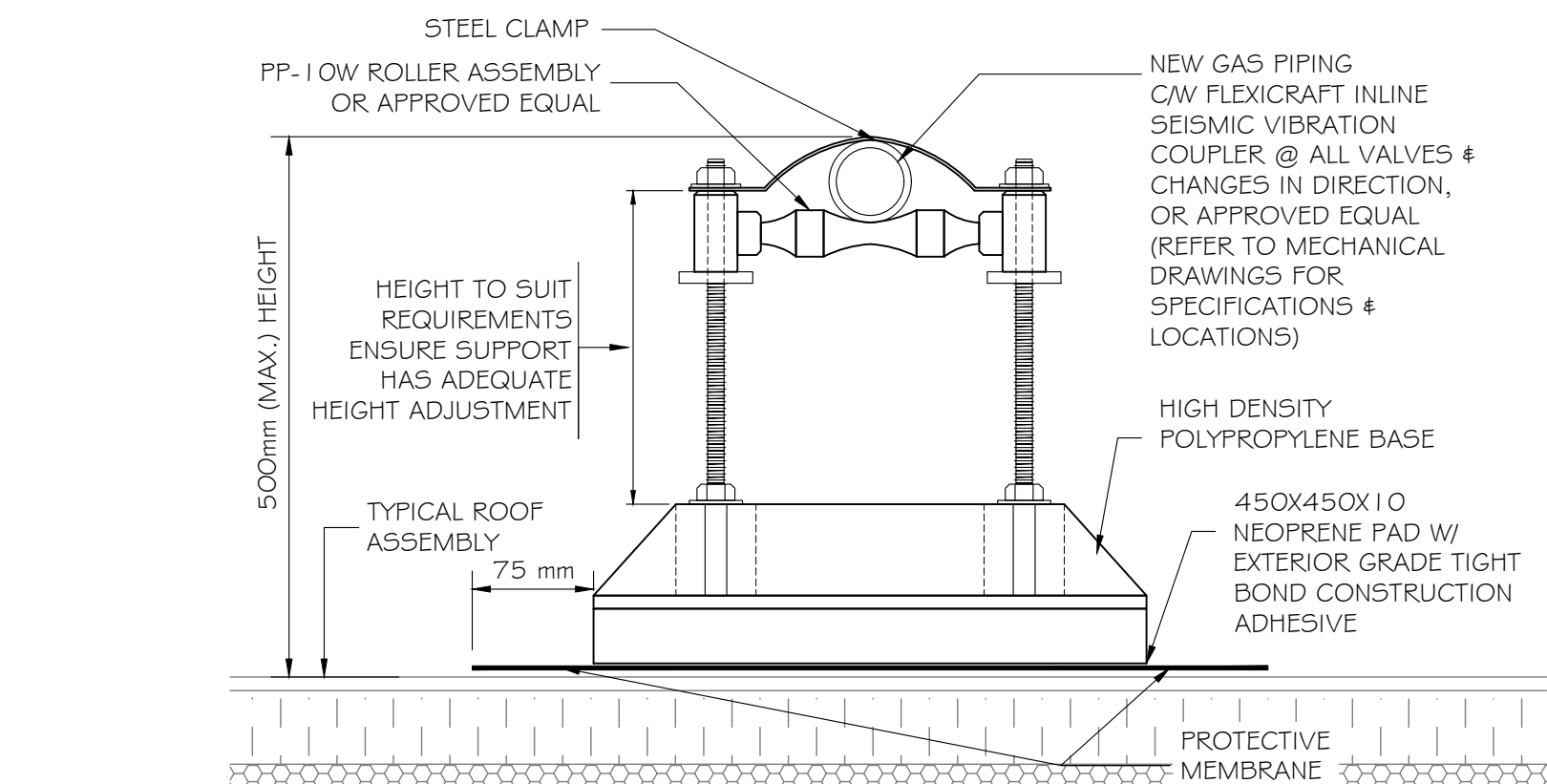
Drawing Title:  
**SECOND FLOOR  
STRUCTURAL  
SEISMIC SUPPORT DETAILS**

Design: BC	Checked: BC	Approved:	Project No.: 11877
Drawn: AD	Checked: BC	Date: 2025-03-26	Contract No.:
Scale: Horizontal: AS SHOWN	Drawing No.: <b>S3</b>	REV DATE: 3/18/2025	



**SEISMIC THRUST BLOCK DETAILS FOR NATURAL GAS PIPING**

SCALE:- 1:10

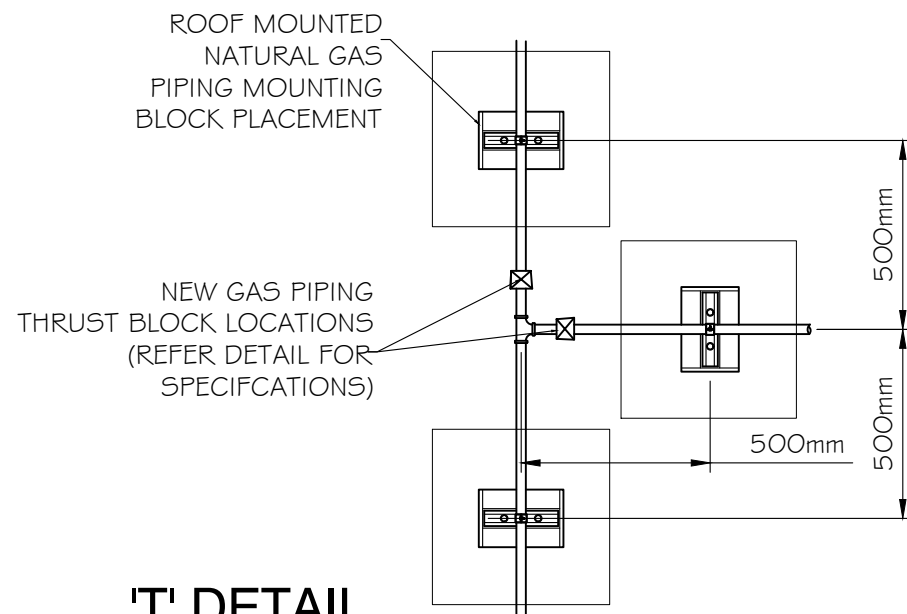


**SEISMIC SUPPORT DETAILS  
FOR NATURAL GAS PIPING**

SCALE:- 1:10

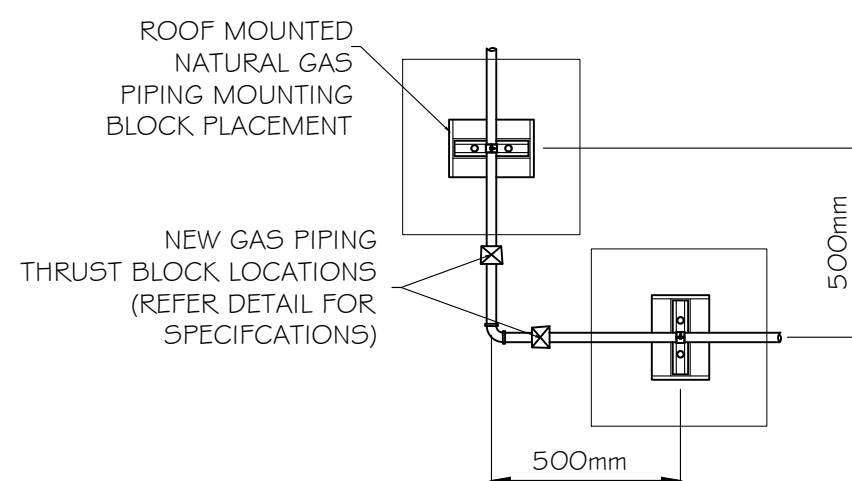
SUPPORT BLOCK SPACING CHART		
PIPE SIZE	WEIGHT LINER (m)	SPACING OF SUPPORTS
SCH 40 - 20mm Ø	1.69 KG	2.4 m o.c
SCH 40 - 25mm Ø	2.50 KG	2.4 m o.c
SCH 40 - 40mm Ø	4.05 KG	1.8 m o.c
SCH 40 - 50mm Ø	5.45 KG	1.8 m o.c
SCH 40 - 65mm Ø	8.64 KG	1.2 m o.c

Sa(0.2) = 0.587    Ie = 1.3    SITE CLASS "D" ASSUMED



**'T' DETAIL**

SCALE:- 1:20



**'L' CORNER DETAIL**

SCALE:- 1:20